

# MONTHLY MEMBERSHIP PROGRESS REPORT

LOCATION INDIA

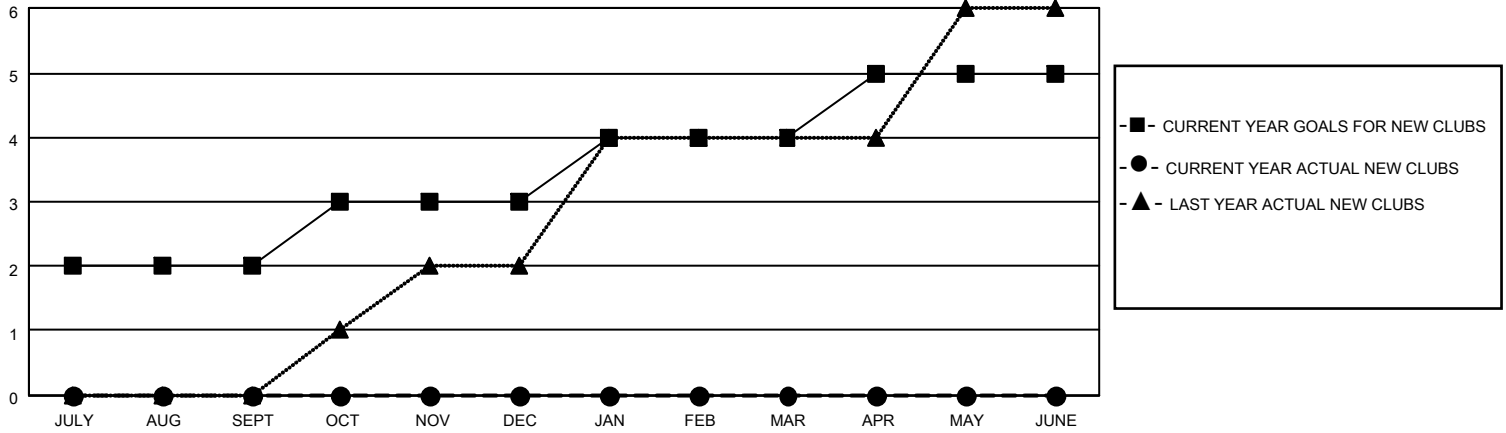
District 321A1

Results as of: 4/30/2023

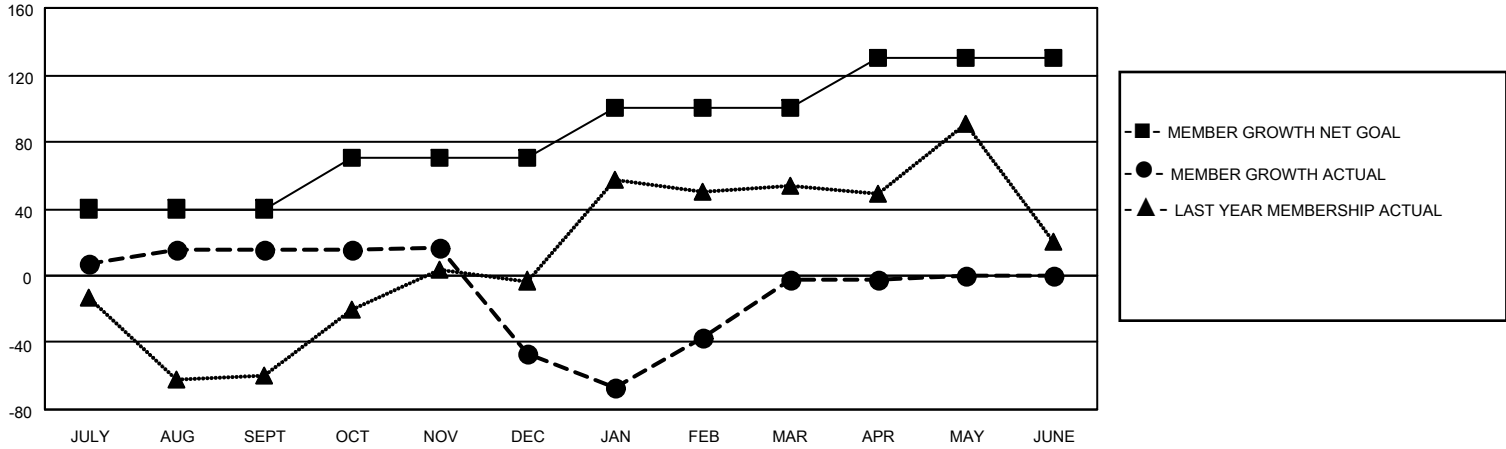
Clubs			
RESULTS FOR 2022-2023			
QUARTER	NEW CLUB GOAL	NEW CLUBS	DROPPED CLUBS
JULY/AUG/SEPT	2	0	0
OCT/NOV/DEC	1	0	3
JAN/FEB/MAR	1	0	1
APR/MAY/JUNE	1	0	0

Members			
RESULTS FOR 2022-2023			
QUARTER	MEMBER GROWTH NET GOAL	MEMBER GROWTH ACTUAL	DROPPED MEMBERS ACTUAL (including transfers)
JULY/AUG/SEPT	40	67	42
OCT/NOV/DEC	30	42	95
JAN/FEB/MAR	30	120	42
APR/MAY/JUNE	30	6	4

**GOALS AND ACTUAL NEW CLUBS CUMULATIVE**



**GOALS AND ACTUAL MEMBERS CUMULATIVE**



DROPPED CLUBS: 4	
<b>DROPPED MEMBERS</b>	
DECEASED	2
CLUB CANCELLED	69
OTHER	112
<b>TOTAL</b>	<b>183</b>

28 CLUBS OF 58 ADDED 1 OR MORE NEW MEMBERS

[CLICK HERE FOR CUMULATIVE MEMBERSHIP DATA](#)

<u>GENDER DISTRIBUTION</u>	
MALE	1,193 (67.36%)
FEMALE	578 (32.64%)
NON BINARY	0 (0.00%)
PREFER NOT TO ANSWER	0 (0.00%)
TOTAL FAMILY UNIT MEMBERS 872	
FAMILY MEMBERS PAYING HALF DUES 548	